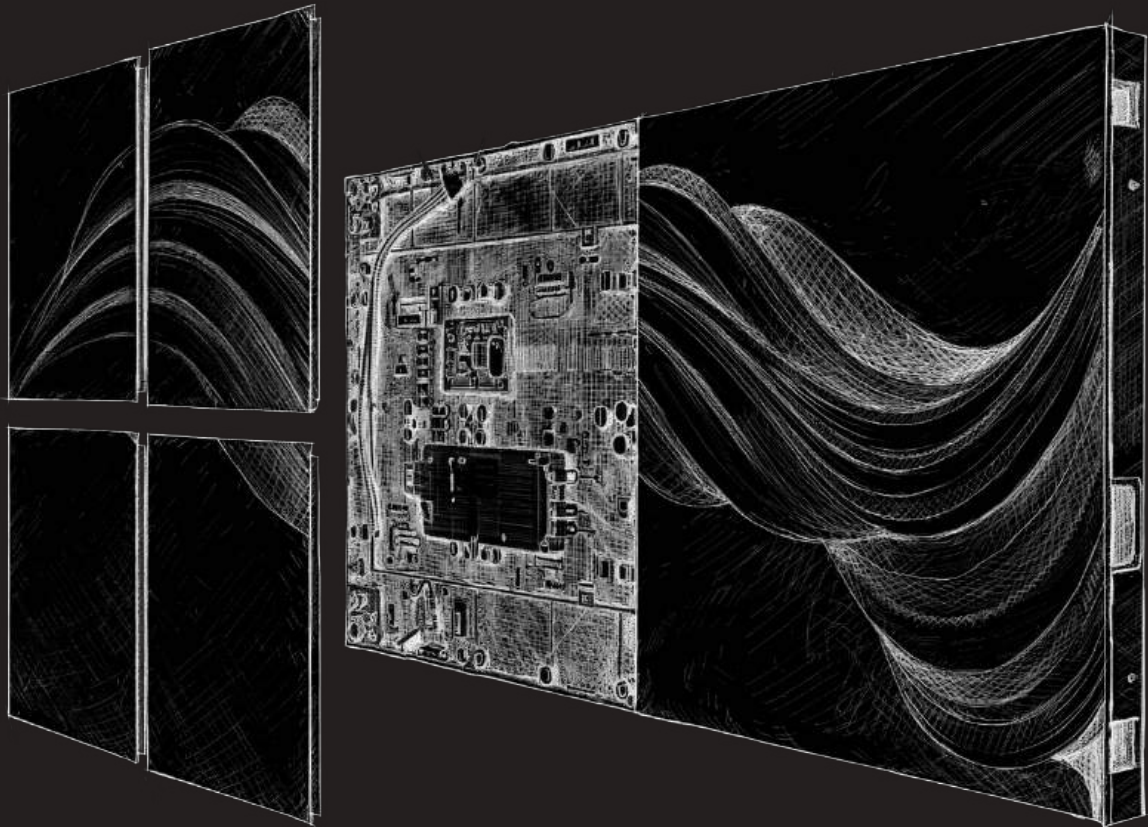


Illuminate

with



ADM Systems Group
1300 236 467
illuminate@admtech.com.au
illuminate-adm.com.au

ABOUT US

WHAT WE DO

We support customers across Australia with products such as industrial power supplies, LED drivers, position sensors, pressure sensors, load cells, and encoders, supporting many different industries.

Our customers include businesses in the industrial automation, medical and pharma, F&B, research and design, and even higher education, as well as lighting specialists and original equipment manufacturers.

But it doesn't stop at stocking and supplying products. We offer a wide range of services Australia wide, delivered by ADM's highly dedicated and professional technical team.

Because it matters to you.

We understand that it matters that you can quickly get a product to your door, and that you need to also get that product to your door at a fair and reasonable price.

We understand that technical support matters, which is why we keep our technical team up to date with the latest product information.

We understand that you want to partner with a supplier that is focused on what matters to you.

WHO WE ARE

ADM Systems Pty Ltd is a family run group of businesses, first established by our Managing Director, Glenn Bates in 1986, and now led by our CEO, Kristin Brown.

Since then we have grown to become Australia's largest distributor of MEAN WELL Power Supplies, Eurotherm Process Control and Data Management Solutions, Industrial Transducers and Sensors, PCA Encoders, Industrial Connectors, and Test & Measurement Instrumentation suitable for a wide range of applications.

ADM has a strong commitment to holding stock. This means you know the product is available when you need it. We also offer volume pricing and scheduled ordering to original equipment manufacturers, and projects that need to order in high quantities, as well as convenient online ordering services for small scale enterprises and retail customers. Our technical staff undertake regular factory training and have close working relationships with our leading suppliers, so that they are up to date with the latest technologies available. This ensures you have the best performing position transducers, load cells, LED drivers and all other components for your application.



ADM QLD Team



ADM VIC Team



Jonathan Brown, General Manager and Kristin Brown, CEO, ADM

CONTENTS

LED DISPLAY

Modular	5
Ultra-Fine LED Display (ART)	6
Two-Sided	7
CUBE	8
Outdoor (Rear)	9
Outdoor (Front)	10
Irregularity	11
Event (Plug and Play)	12
Event (Cable)	13
Poster	14
Foldable	15
Shelf	16
Transparent	17
Film Display	18

LCD DISPLAY

Signage - Indoor	19
Signage - Outdoor	20
Modular	21
Bar-Type	22
Desktop	23

LOCAL STOCK & SUPPORT

ADM HAS ESTABLISHED A SOLID REPUTATION IN AUSTRALIA OVER THE PAST 40 YEARS AS A TRUSTED PROVIDER OF HIGHLY RELIABLE LED DRIVERS, LIGHTING CONTROL DEVICES, AND ACCESSORIES. OUR PRODUCTS ARE KNOWN FOR THEIR DEPENDABILITY AND AFFORDABILITY.

ADM's primary objective is always customer service. This means prioritising meeting the needs and expectations of our customers above all else. To achieve this objective, ADM has worked closely with our suppliers for over three decades. Carrying stock locally, providing application-specific advice, and offering complete solutions are all part of our service offering. ADM holds stock locally, so that the item you want is readily available when you need it. This allows for quicker delivery times and the ability to respond to your needs more rapidly. Providing application-specific advice means that ADM offers expertise and guidance tailored to your specific needs and applications. This ensures that you receive the best advice possible and can make informed decisions.



Area of Recommended Application

		AREA												
		PAGE	Commercial Building	Hotel	Retail Shop	Shopping Centre	Supermarket	Restaurant / Cafe	Petrol Station	Transport Hub	Stadium	Museum / Gallery	Event / Festival Stage	Outdoor Billboard
LED DISPLAY	Modular	5	✓	✓	✓	✓				✓	✓		✓	✓
	Ultra-Fine (ART)	6	✓	✓	✓							✓		
	Two-Sided	7			✓	✓	✓			✓				
	Cube	8			✓	✓							✓	
	Outdoor (Rear)	9	✓	✓		✓			✓	✓	✓			✓
	Outdoor (Front)	10	✓	✓	✓	✓			✓	✓	✓			✓
	Irregularity	11	✓	✓	✓	✓						✓	✓	
	Event (Plug & Play)	12									✓		✓	
	Event (Cable)	13									✓		✓	
	Poster	14	✓	✓	✓	✓	✓	✓					✓	
	Foldable	15		✓	✓	✓		✓					✓	
	Shelf	16			✓	✓	✓	✓						
	Transparent	17	✓		✓	✓				✓				
Film	18	✓		✓	✓									
LCD DISPLAY	Indoor	19	✓	✓	✓	✓	✓	✓						
	Outdoor	20	✓		✓	✓		✓	✓					✓
	Modular (Outdoor Wall)	21	✓			✓			✓	✓				✓
	Bar-Type	22		✓	✓	✓	✓	✓						
	Desktop	23	✓		✓			✓						

Modular



Product Overview

- High-precision die-cast aluminium cabinet structure
- Designed for seamless LED wall assembly
- Lightweight yet strong structural integrity
- Suitable for indoor, outdoor and rental applications

Key Features

- Die-cast aluminium frame for high accuracy and durability
- Excellent heat dissipation performance
- Slim cabinet profile for modern installations
- Fast-lock system for quick assembly
- Seamless splicing with minimal gaps

Structural Advantages

- Strong structural rigidity
- Reduced cabinet deformation over time
- Lightweight for easier handling and installation
- Corrosion-resistant aluminium material

Technical Options

- Pixel Pitch: P1.25 / P1.538 / P1.86 / P2 / P2.5
- Cabinet Size: 640 x 480 mm / 640 x 640 mm
- Standard cabinet sizes for flexible configurations
- Front or rear maintenance access
- High refresh rate for smooth video playback

Applications

- Indoor or outdoor video walls
- Conference rooms and control centres
- Rental stage displays
- Corporate showrooms
- Exhibition booths
- Benefits
- Precise alignment for seamless visual effect
- Easy installation and dismantling
- Long-term structural reliability
- Professional solution for high-end LED projects

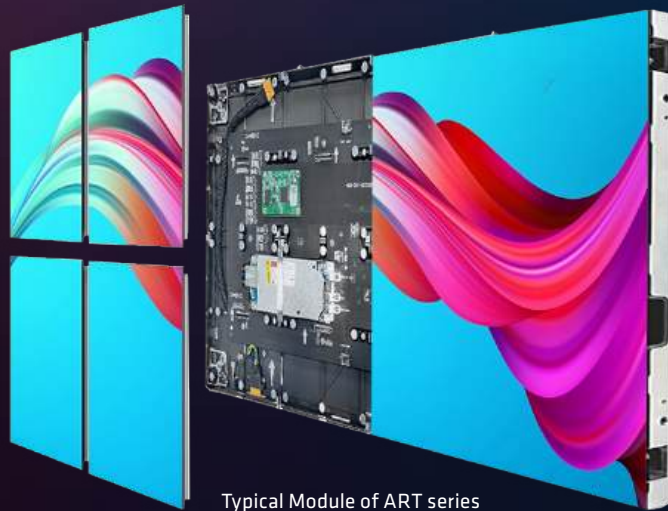


Die Cast Aluminium Cabinet
(LED display was mounted to a cabinet)



Recent Project for a Church in Australia
(Natural light, text and video requirements)

Ultra-Fine LED Display (ART)



Typical Module of ART series

Product Overview

- Advanced COB (Chip-on-Board) LED technology
- Designed for ultra-close viewing environments
- Seamless high-definition indoor video wall solution
- Premium display performance for professional applications

Key Features

- Ultra-fine pixel pitch for crystal-clear image quality
- Enhanced surface protection against impact and dust
- Superior contrast ratio with deeper black levels
- Excellent colour uniformity and visual consistency
- Reduced glare and improved viewing comfort
- Technical Specifications
- Pixel Pitch: P0.9375 / P1.25 / P1.5625
- Cabinet Size: 600 × 337.5mm
- Front service maintenance
- High refresh rate for a smooth video playback

Applications

- Modern business buildings
- Museums
- Control rooms and command centres
- Corporate boardrooms
- Broadcast studios
- High-end retail displays
- Data visualisation centres

Advantages

- Suitable for close viewing distances
- Improved durability compared to traditional SMD LED
- Stable long-term performance
- Ideal for 4K and high-resolution display walls



Recent Project for a Museum Art Wall Overseas
(Immersive Experience, Sharp Picture, Ultra-high Contrast)

Two-Sided



Product Overview

- Dual-sided LED display for maximum visibility
- Designed for suspended or ceiling-mounted installations
- Displays content on both front and back surfaces
- Ideal for high-traffic retail environments

Key Features

- **Two-sided display for 360° exposure**
- Slim cabinet structure
- High brightness for indoor commercial lighting
- Fine pixel pitch for clear close-range viewing
- Stable and seamless image performance

Technical Specifications

- Pixel Pitch: P2.5
- Cabinet Size: 640 × 800mm
- Indoor application
- Hanging installation design

Applications

- Supermarkets and hypermarkets
- Shopping malls
- Retail promotional aisles
- Commercial centres
- Airport and transport retail zones

Advantages

- Efficiently utilising space for advertisements
- Increases promotional visibility from multiple directions
- Ideal for aisle-end or suspended display positions
- Clean and modern retail presentation



Recent Project for a Supermarket Overseas
(Dynamic signs, 360 viewing angle, High visibility)

CUBE



Overview

- Custom 3D Cube LED Display solution
- Successfully supplied to Uniqlo Japan retail stores
- Designed for premium in-store brand presentation

Viewing Distance

- 4, 5 or 6-side seamless LED display
- High brightness and vivid colours
- Fine pixel pitch for close viewing
- Lightweight cabinet design
- Ceiling-mounted or stand-mounted options

Technical Options

- Front service maintenance
- Stable signal and power integration
- Wi-Fi connectivity

Applications

- Fashion retail flagship stores
- Shopping malls
- Brand activation zones
- Promotional campaign displays

Benefits for Retail

- 360° brand visibility
- High-impact centrepiece display
- Enhances store atmosphere
- Ideal for seasonal campaigns and product launches

Pitch Size

- P1.538
- P2.5
- P3.91

Cube Size

- 320 x 320mm
- 480 x 480mm
- 500 x 500mm



Recent Project for Uniqlo Overseas (Unique Design, Attractive, Dynamic Advertisement)

Outdoor (Rear)



Typical Cabinet of Outdoor Rear series

Product Overview

- High-brightness outdoor LED display
- Designed for large-format billboards and commercial signage
- Rear-access maintenance structure
- Suitable for fixed outdoor installations

Key Features

- **Rear-maintenance cabinet design for easy servicing**
- High brightness for direct sunlight visibility
- Weather-resistant structure (IP-rated protection)
- Strong cabinet frame for long-term outdoor durability
- Stable performance in extreme temperatures

Technical Specifications

- Pixel Pitch: **P2.5 / P3.076 / P4 / P5 / P8 / P10**
- Cabinet Size: **Customised based on module configuration**
- High refresh rate for a smooth video playback
- Outdoor-grade power and signal system

Applications

- Roadside billboards
- Shopping mall exterior walls
- Commercial building façades
- Transport hubs and public spaces
- Stadium and event venue displays

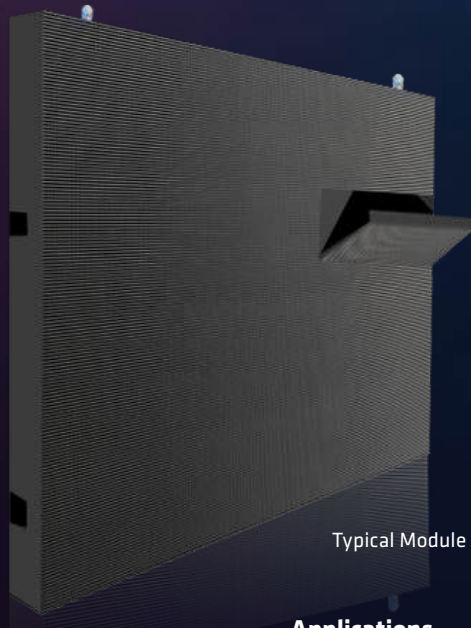
Advantages

- Designed for large-scale outdoor projects
- Reliable operation in harsh weather conditions
- Easy rear access for maintenance
- Flexible cabinet sizing for project requirements



Recent Project for a Shopping Centre Overseas
(High Contrast, Easy Maintenance, Great Viewing Distance)

Outdoor (Front)



Typical Module of Outdoor Front Series

Product Overview

- High-brightness outdoor LED display
- Designed for wall-mounted and façade installations
- **Front-maintenance structure using magnetic module mounting**
- Ideal for locations with limited rear access

Key Features

- **Magnetic modules for fast front removal and installation**
- Tool-assisted front service access
- High brightness for clear sunlight visibility
- Weather-resistant cabinet with IP-rated protection
- Strong structural design for long-term outdoor use

Technical Specifications

- Pixel Pitch: **P2.976 / P3.91 / P4 / P5 / P6.67 / P8 / P10**
- Cabinet Size: **Customised based on module configuration**
- High refresh rate for a smooth video playback
- Outdoor-grade power and signal system

Applications

- Building façades
- Shopping mall exteriors
- Roadside digital signage
- Commercial advertising boards
- Public information displays

Advantages

- No rear access required for maintenance
- Faster servicing with magnetic module design
- Suitable for space-restricted installations
- Durable performance in harsh weather conditions



Recent Project for a Shopping Centre Overseas

Irregularity



Example of a corner piece (irregularity screen)

Product Overview

- Custom-shaped LED display for creative installations
- Supports curved, wave, cylindrical, and irregular structures
- Designed for immersive visual environments
- Ideal for architectural and experiential projects

Key Features

- Flexible module configuration for non-standard designs
- Seamless curved surface integration
- High-resolution fine pixel pitch options
- Strong structural stability for complex builds
- High refresh rate and vivid colour performance

Technical Specifications

- Pixel Pitch: **P1.25 / P1.538 / P1.86 / P2 / P2.5 / P4**
- Module Sizes: **240 × 120mm / 256 × 128mm / 320 × 160mm**
- Indoor applications (custom outdoor options available)

Applications

- Exhibition halls and immersive spaces
- Shopping malls and luxury retail shops
- Stage design and event backdrops
- Museums and digital art installations
- Corporate experience centres

Advantages

- Enables unique architectural LED designs
- Creates immersive 3D visual impact
- Customisable to project requirements
- Ideal for high-end, statement-making installations



Sample of a Personal Experience with an Irregularity Screen at a Kid Science Centre Overseas



Product Application Overseas

Event (Plug and Play)



500 x 500mm Plug and Play Module



500 x 1000mm Plug and Play Module

Product Overview

- Professional rental LED display for stage and event applications
- Designed for rapid setup and dismantling
- Hard-connection cabinet system with integrated connectors

Key Features

- **Rapid commissioning and decommissioning for event ingress and egress operations**
- All power and signal connectors integrated within the cabinet
- Clean rear structure with minimal cable clutter
- Lightweight die-cast cabinet for easy handling

Technical Specifications

- Pixel Pitch: **P2.604 / P2.976 / P3.91**

- Cabinet Size: **500 x 500mm / 500 x 1000mm**
- Seamless splicing design
- High refresh rate for live event performances
- Applications
 - Concerts and live performances
 - Corporate events
 - Exhibitions and trade shows
 - Stage backdrops
 - Temporary event installations

Advantages

- Faster installation compared to traditional cabled systems
- Reduced setup errors with built-in connection design
- Clean and professional rear appearance
- Ideal for high-frequency rental use



Recent Project for a Festival Stage Overseas



Recent Project for a Conference Overseas
(Quick Assembly, Premium Light Performance, High Brightness)

Event (Cable)



Product Overview

- Professional rental LED display system
- Designed for stage, events, and temporary installations
- Soft-connection structure with external cabling
- Optimised for flexibility and fast deployment

Key Features

- **Requires power and signal cabling between cabinets**
- Flexible wiring layout for complex stage designs
- Quick assembly and disassembly for event turnovers
- Lightweight die-cast cabinet structure
- Secure locking system for stable installation

Technical Specifications

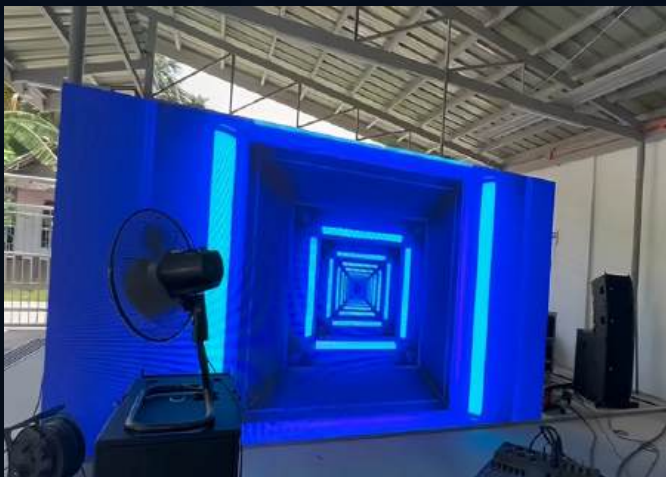
- Pixel Pitch: **P2.604 / P2.976 / P3.91**
- Cabinet Size: **500 × 500mm / 500 × 1000mm**
- High refresh rate for live performances
- Seamless splicing capability

Applications

- Concerts and music festivals
- Corporate conferences
- Exhibition booths
- Stage backdrops
- Creative event structures

Advantages

- **Fast setup despite external cabling requirements**
- Flexible configuration for custom shapes
- Easy maintenance access
- Cost-effective solution for rental companies



Recent Project for a Conference Overseas
(Low Cost, Quick Setup, View Distance)

Poster



Product Overview

- Slim, all-in-one LED digital poster
- Portable design with integrated wheelbase
- Easy to relocate within store layout
- Plug-and-play installation

Key Features

- Ultra-slim cabinet design
- High brightness and vivid colours
- Fine pixel pitch for close viewing
- Built-in media player and content control
- Move and reposition anytime without reinstallation

Technical Specifications

- Pixel Pitch: P1.538 / P1.86 / P2.0 / P2.5
- Cabinet Size: 640 × 1600mm / 640 × 1760mm / 640 × 1920mm
- Indoor and outdoor applications
- Front or rear service maintenance
- HDMI input and output
- Wi-Fi connectivity

Applications

- Store entrances and window displays
- Seasonal promotions
- In-store campaigns
- Exhibitions and events

Benefits

- Digital replacement for traditional lightboxes
- Fast content updates
- Flexible placement for changing promotions
- Enhances customer engagement



Recent Project for a Retail Shop Overseas



Display Screen at the ADM HQ in Victoria

Foldable



Unfolding screens transform to a double-sided sign

Product Overview

- Slim, all-in-one foldable LED poster display
- Designed for retail, exhibitions, and events
- Compact structure for easy transportation and storage
- Plug-and-play operations

Key Features

- **Foldable cabinet design for space-saving logistics**
- Integrated wheelbase for smooth relocation
- Quick setup without complex installation
- Fine pixel pitch for close viewing distance
- High brightness and vivid colours
- Built-in media player with flexible content control

Technical Specifications

- Pixel Pitch: **P1.538 / P1.86 / P2.0 / P2.5**
- Cabinet Size: **640 × 1920mm**

Indoor application

- Front service maintenance
- Lightweight aluminium cabinet

Applications

- Retail store entrances
- Window displays
- Shopping mall promotions
- Trade shows and exhibitions
- Temporary stage backdrops

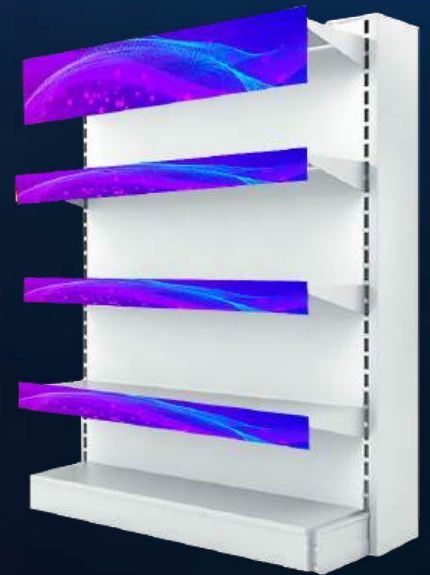
Advantages

- **Portable and easy to relocate**
- **Folds for convenient storage and transportation**
- Ideal for seasonal campaigns and short-term events
- Cost-effective alternative to fixed LED installations



Recent Project for a Business Conference Overseas
(Multiple foldable LED screens working in Sync Mode)

Shelf



Overview

- Slim digital LED strip integrated into retail shelves
- Displays videos, animations, pricing updates and promotions
- Remote connectivity and mass deployment features

Viewing Distance

- Ideal viewing range: 0.5m – 3m
- Designed for close-range retail browsing
- Fine pixel pitch for clear text and graphics

Brightness

- Indoor: 800 – 1500 nits
- Adjustable to suit store lighting

Pitch Size

- P1.2
- P1.5
- P1.5625
- P1.875

Screen Size

- 300x60mm
- 600x60mm
- 900x60mm
- 1200x60mm
- 400X50mm
- 600X50mm
- 800X50mm
- 1000X50mm
- 1200X50mm

Applications

- Supermarkets
- Convenience stores
- Electronic retail shops
- Pharmacies and liquor stores
- Key Benefits
- Increases product visibility
- Boosts impulse purchases
- Real-time content updates
- Easy installation on standard shelving



Display Shelf in ADM Victoria

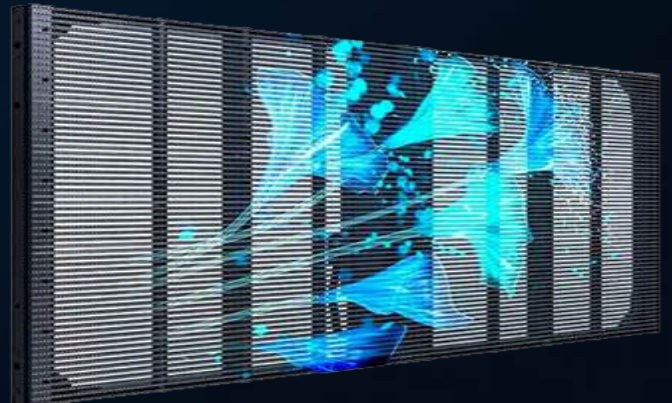


Recent Project – Supermarket (International)

Transparent



Indoor



Outdoor

Product Overview

- High-transparency LED display for glass façades and windows
- Allows access to natural light
- Lightweight structure with minimal visual obstruction
- Ideal for premium retail environments

Transparency and Design

- Transparency rate up to 60% – 80%
- Slim aluminium frame structure
- Modern, futuristic visual effect
- Maintains external storefront visibility

Installation Options

- Window-facing installation
- Hanging or fixed frame structure
- Suitable for large-format seamless assembly

Technical Specifications

- Fine pixel pitch
 - Indoor: P2.6-5.2 / P2.8-5.6 / P3.9-7.8
 - Outdoor: P3.9-7.8
- Pixel pitch tailored to viewing distance
- Multiple cabinet sizes
 - Indoor: 1000 x 1000mm / 1000 x 500mm / 500 x 500mm
 - Outdoor: 1000 x 500mm
- High refresh rate for a smooth video playback

Applications

- Shopping mall storefronts
- Flagship retail stores
- Commercial building glass façades
- Airports and transportation hubs
- Exhibition displays

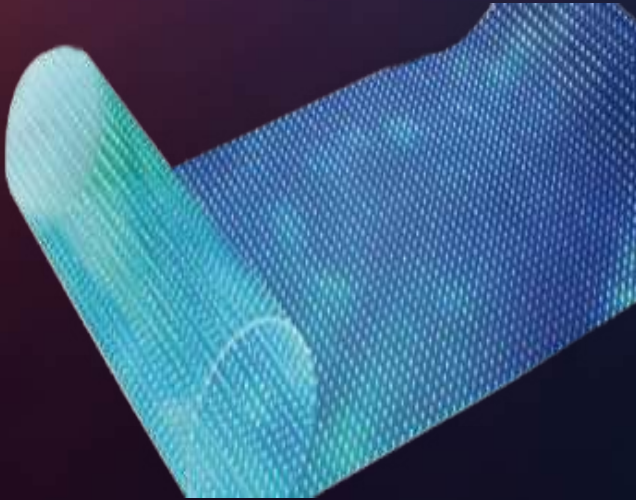
Advantages

- Enhances brand visibility without blocking interior views
- Creates floating 3D visual effects
- Lightweight compared to traditional LED walls
- Easy maintenance access



Recent Project for a Retail Shop Overseas

Film Display



Product Overview

- Ultra-thin adhesive transparent LED film
- Designed for direct application onto glass surfaces
- Lightweight structure with minimal visual obstruction
- Ideal for modern retail storefronts and glass façades

Key Features

- High transparency while displaying dynamic content
- Slim and flexible film design
- Easy installation on existing glass without heavy framing
- Lightweight construction reduces structural load
- High brightness for indoor and window-facing applications

Technical Specifications

- Pixel Pitch: P4.8 / P6.25 / P8 / P10 / 20
- Modular design for seamless large-area assembly
- Indoor or semi-outdoor window applications

Applications

- Retail shop windows
- Shopping mall glass façades
- Commercial building glass walls
- Brand promotions and seasonal campaigns

Advantages

- Maintains natural daylight and visibility
- Creates floating digital visual effects
- Space-saving alternative to traditional LED cabinets
- Quick installation and easy maintenance



Recent Project for a Shopping Centre Overseas
(Attractive, Motion, High Transparency)

Signage - Indoor



Product Overview

- Commercial LCD digital signage displays
- Designed for retail, supermarkets, malls, and commercial spaces
- Available in wall-mounted and floor-standing configurations
- Suitable for advertising, promotions, and information displays

Available Sizes

- 32" / 43" / 49" / 55" / 65"

Installation Options

- Wall-mounted displays
- Floor-standing totem displays
- Slim and modern cabinet designs
- Suitable for indoor commercial environments

Touch Options

- Non-touch display
- IR touch option
- Capacitive touch option

Display Performance

- Brightness: 500 nits standard (up to 1000 nits optional)
- Full HD / 4K resolution options
- High contrast and vivid colours
- Designed for long-hour commercial operations

Applications

- Retail stores and supermarkets
- Shopping malls
- Corporate lobbies
- Restaurants and quick-service chains
- Exhibition and promotional areas

Advantages

- Cost-effective digital advertising solution
- Easy content update
- Multiple size options to suit project requirements
- Suitable for both branding and information displays

Signage - Outdoor



OOH Series



OOH Slim Bezel Series



Drive-Thru Series



Billboard Series

Product Group Overview

- A complete range of high-brightness outdoor LCD displays designed for commercial and public environments. Built for 24/7 operation with weatherproof protection and sunlight readability.

Available Series

- **Outdoor Local Dimming Displays** - Enhanced contrast and visibility under strong sunlight
- **Outdoor Optical Bonding Displays** - Reduced reflection, improved clarity, and increased durability
- **OOH Standard Series** - Reliable outdoor digital signage for advertising and information display
- **Ultra-Slim Bezel Series** - Modern, premium appearance with outdoor-rated construction
- **Drive-Thru Menu Boards** - High-brightness displays for quick-service restaurant applications
- **Outdoor LCD Billboards** - Large-format digital advertising for roadside and public spaces

Key Features

- Touch option
- High brightness (sunlight readable)
- Weatherproof outdoor cabinet
- 24/7 commercial operation
- Remote content management
- Custom sizing available

Modular



Typical LCD Display -
Modular



Product Overview

- High-brightness outdoor LCD display designed for wall-mounted installations. Engineered for sunlight readability, durability, and 24/7 commercial operations.

Key Performance

- 1152-Zone Dynamic Backlight
- Up to 30% Energy Savings
- Brightness: 2500–4500 nits (Auto Adjusting)
- 178° Wide-Viewing Angle

Available Sizes

- 32" / 43" / 49" / 55" / 65" / 75" / 86"

Core Features

- Industrial-grade high-TNI panel
- AR-toughened glass with optical bonding
- Industrial AC-DC power converter
- IP65-rated waterproof and dustproof design
- Full aluminium enclosure
- Aluminium fin heat sink for efficient cooling
- Waterproof aviation connectors
- Modular design

Advantages

- Suitable for direct sunlight environments
- Energy-efficient dynamic backlight control
- Robust structure for harsh outdoor conditions
- Reliable long-term performance

Bar-Type



Typical Application of LCD Display Bar-Type

Product Overview

- Ultra-wide LCD digital signage designed for shelf edges, retail displays, and modern commercial environments. Ideal for delivering dynamic content in narrow or elongated spaces.

Available Sizes (Custom sizes available)

- 24"
- 36"
- 38"
- 48"

Key Specifications

- Aspect Ratios: 16:4 / 24:9 / 32:9
- Orientation: Landscape or Portrait
- Brightness: 700-1000 nits
- Installation: Wall-mounted or Embedded

Applications

- Retail shelves and product displays
- Luxury boutiques
- Eyewear and cosmetics stores
- Supermarket aisles
- Information strips and menu displays

Advantages

- Slim and modern design
- High brightness for commercial lighting environments
- Space-efficient format
- Easy integration into cabinetry or shelving
- Supports dynamic advertising content



Desktop



LCD Display Product Sample Applications

Product Overview

- Compact LCD digital signage designed for countertops, reception desks, cafés, and retail checkout areas. Ideal for promotions, menus, and brand messaging in close viewing environments.

Available Sizes

- 23.8"
- 27"
- 34"

Key Specifications

- Brightness: 300–500 nits
- Optional Capacitive Touch
- Full HD / Ultra-wide options (model dependent)
- Commercial-grade panel for long-hour operation

Applications

- Café and restaurant counters
- Retail checkout displays
- Reception desks
- Promotional tabletop displays
- Information or ordering terminals

Advantages

- Compact and space-saving design
- Easy plug-and-play setup
- Modern and clean appearance
- Suitable for close-range viewing

Illuminate

with

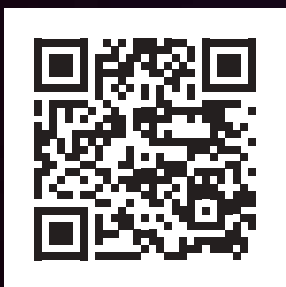


ADM offers custom LED lighting solutions for your signage projects and general lighting requirements.

Contact our team if you can't find off-the-shelf solutions for what you need:

1300 236 467 or illuminate@admtech.com.au

Visit our website and see our range



Scan the QR
Code for more
information about
Illuminate with ADM