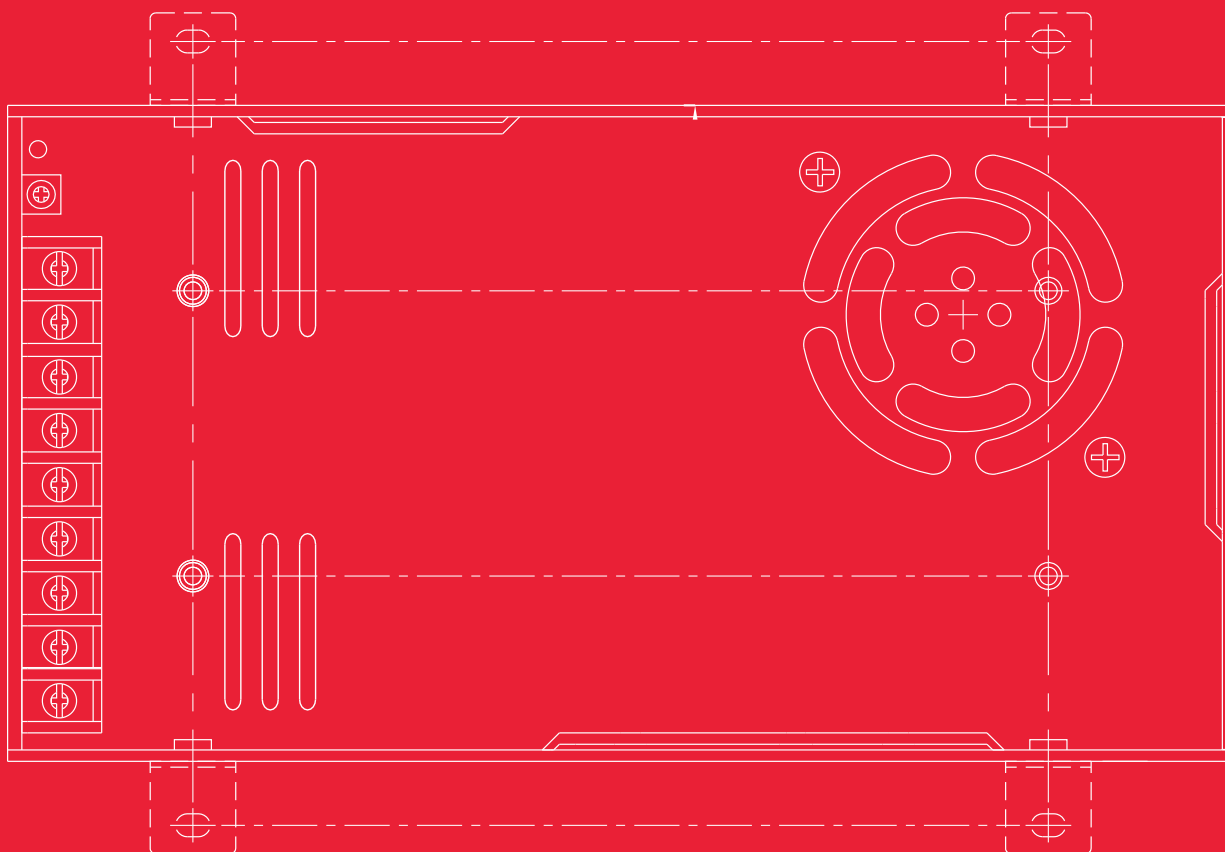


# INDUSTRIAL POWER



# LOCAL STOCK & SUPPORT

**ADM HAS ESTABLISHED A SOLID REPUTATION IN AUSTRALIA OVER THE PAST 35 YEARS AS A TRUSTED PROVIDER OF HIGHLY RELIABLE LED DRIVERS, LIGHTING CONTROL DEVICES, AND ACCESSORIES. OUR PRODUCTS ARE KNOWN FOR THEIR DEPENDABILITY AND AFFORDABILITY.**

ADM's primary objective is always customer service. This means prioritising meeting the needs and expectations of our customers above all else. To achieve this objective, ADM has worked closely with our suppliers for over three decades. Carrying stock locally, providing application-specific advice, and offering complete solutions are all part of our service offering. ADM holds stock locally, so that the item you want is readily available when you need it. This allows for quicker delivery times and the ability to respond to your needs more rapidly. Providing application-specific advice means that ADM offers expertise and guidance tailored to your specific needs and applications. This ensures that you receive the best advice possible and can make informed decisions.



# CONTENTS

<b>3</b>	<b>ABOUT US</b>
<b>4</b>	<b>DIN RAIL</b>
<b>6</b>	<b>DC UPS</b>
<b>7</b>	<b>AC-DC ENCLOSED</b>
<b>9</b>	<b>HARTING HAN® INDUSTRIAL CONNECTORS</b>
<b>10</b>	<b>MULTI RAIL POWER SUPPLIES</b>
<b>11</b>	<b>BATTERY CHARGERS</b>
<b>12</b>	<b>POWER ADAPTERS</b>
<b>12</b>	<b>AC/AC TRANSFORMERS</b>
<b>13</b>	<b>LED LIGHTING PRODUCTS</b>
<b>14</b>	<b>AC/DC RACK MOUNT POWER SUPPLIES</b>
<b>15</b>	<b>DC-DC CONVERTERS</b>
<b>16</b>	<b>DC-AC INVERTERS</b>
<b>17</b>	<b>ENCLOSURES</b>
<b>18</b>	<b>AC/DC MODULAR POWER SUPPLIES</b>
<b>18</b>	<b>OPEN FRAMES</b>
<b>19</b>	<b>RAILWAY POWER SUPPLIES</b>
<b>22</b>	<b>CABLES AND ACCESSORIES</b>
<b>23</b>	<b>ABOUT US</b>
<b>24</b>	<b>OUR SUPPLIERS</b>

# ABOUT US

**Glenn Bates**  
Founder and Managing Director



## WHAT DO WE DO

We support customers across Australia with products such as industrial power supplies, LED drivers, position sensors, pressure sensors, load cells, and encoders, supporting many different industries.

Our customers include businesses in the industrial automation, medical and pharma, F&B, research and design, and even higher education, as well as lighting specialists and original equipment manufacturers.

But it doesn't stop at stocking and supplying products. We offer a wide range of services Australia wide, delivered by ADM's highly dedicated and professional technical team.

Because it matters to you.

We understand that it matters that you can quickly get a product to your door, and that you need to also get that product to your door at a fair and reasonable price.

We understand that technical support matters, which is why we keep our technical team up to date with the latest product information.

We understand that you want to partner with a supplier that is focused on what matters to you.

## WHO WE ARE

ADM Systems Pty Ltd is a family run group of businesses, first established by our Managing Director, Glenn Bates in 1986, and now led by our CEO, Kristin Brown.

Since then we have grown to become Australia's largest distributor of MEAN WELL Power Supplies, Eurotherm Process Control and Data Management Solutions, Industrial Transducers and Sensors, PCA Encoders, Industrial Connectors, and Test & Measurement Instrumentation suitable for a wide range of applications.

ADM has a strong commitment to holding stock. This means you know the product is available when you need it. We also offer volume pricing and scheduled ordering to original equipment manufacturers, and projects that need to order in high quantities, as well as convenient online ordering services for small scale enterprises and retail customers. Our technical staff undertake regular factory training and have close working relationships with our leading suppliers, so that they are up to date with the latest technologies available. This ensures you have the best performing position transducers, load cells, led drivers and all other components for your application.

**IF YOU ARE VISITING OUR HEAD OFFICE IN DINGLEY VILLAGE, YOU ARE LIKELY TO RECEIVE A VERY WARM WELCOME FROM OUR COMPANY DOGS.**



# DIN RAIL

ADM has been the primary MEAN WELL distributor in Australia for over 20 years. Since 1982, MEAN WELL has grown to be one of the leading standard switching power manufacturers in the world. ADM ensures all MEAN WELL products available locally are certified with Australian Approvals.

MEAN WELL provides DIN rail power supplies ranging from 10 W single-phase units to 1 kW three-phase models that are compliant with all relevant industry standards. These power supplies feature an extensive input range and are compatible with IT, TN, or TT systems, accommodating both triangular and star-shaped connections. Typically, DIN rail power supplies are available for O (Omega), C, or G profiles.

## HDR SERIES



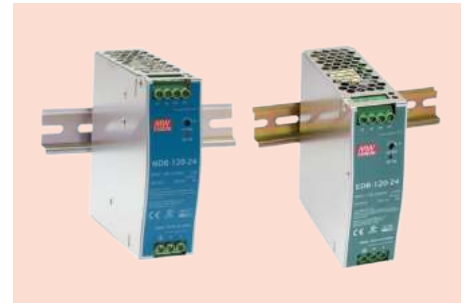
- 15W ~ 150W
- Universal full range input: 85~264 VAC (277 VAC operational)
- Isolation class II
- DIN Rail: TS-35/7.5 or TS-35/15
- Cooling by free air convection
- No load power consumption <0.3W
- Class 2 power unit/Pass LPS (HDR-15/30/60/100)
- Over voltage category III
- DC output voltage adjustable
- LED indicator for power on
- 3 years warranty

## MDR SERIES



- 10W ~ 100W
- Universal full range input: 85~264 VAC
- Class I power unit
- DIN Rail: TS-35/7.5 or TS-35/15
- Cooling by free air convection
- Built-in active PFC and over temp. Protection (MDR-100)
- No load power consumption <0.75~1W
- DC output voltage adjustable (MDR-20~100)
- LED indicator for power on
- 3 years warranty

## NDR/EDR SERIES



- 75W ~ 960W
- Universal full range input: 90~264 VAC
- DIN Rail: TS-35/7.5 or TS-35/15
- Built-in active PFC (NDR-240/480)
- Cooling by free air convection
- DC output voltage adjustable
- Built-in constant current limiting circuit
- EN61000-6-2 (EN50082-2 industrial immunity level)
- UL508 (industrial control equipment) approved
- LED indicator for power on
- 3 years warranty (NDR Series) / 2 years warranty (EDR Series)

## XDR-E SERIES



- 75W ~ 960W
- Input range: 85~264 VAC
- Ultra slim width: 30~96mm (by model)
- High efficiency up to 96%
- Current sharing up to 3840W for parallel use (XDR-480E/960E only)
- Over voltage category III (OVC III)
- -40~+70°C wide operating temperature
- Can be installed on DIN Rail TS-35/7.5 or 15
- 3 years warranty

## WDR SERIES



- 60W ~ 480W
- Single or two phase ultra wide input range 180~550VAC
- DIN Rail: TS-35/7.5 or TS-35/15
- Built-in constant current limiting circuit
- Cooling by free air convection
- DC output voltage adjustable
- EN61000-6-2(EN50082-2) industrial immunity level
- Over voltage category III (WDR-60)
- 3 years warranty



## SDR SERIES



- 75W ~ 480W
- Universal AC input / Full range (SDR-75~480)
- 180~264 VAC input only (SDR-960)
- DIN Rail: TS-35/7.5 or TS-35/15
- High efficiency up to 94%
- Cooling by free air convection
- 130%~150% peak load capability
- DC output voltage adjustable
- Built-in constant current limiting circuit
- Comply with SEMI-F47
- EN61000-6-2 (EN50082-2) industrial immunity level
- UL508 (industrial control equipment) approved
- 3 years warranty

## TDR SERIES



- 240W ~ 960W
- 3-phase, 340~550VAC wide range input (2-phase operation possible)
- Slim width with 63~110 mm
- DIN Rail: TS-35/7.5 or TS-35/15
- High efficiency up to 94.5%
- Cooling by free air convection
- DC output voltage adjustable
- UL508 / UL61010-1 Industrial control equipment approved
- 3 years warranty

## DRA SERIES



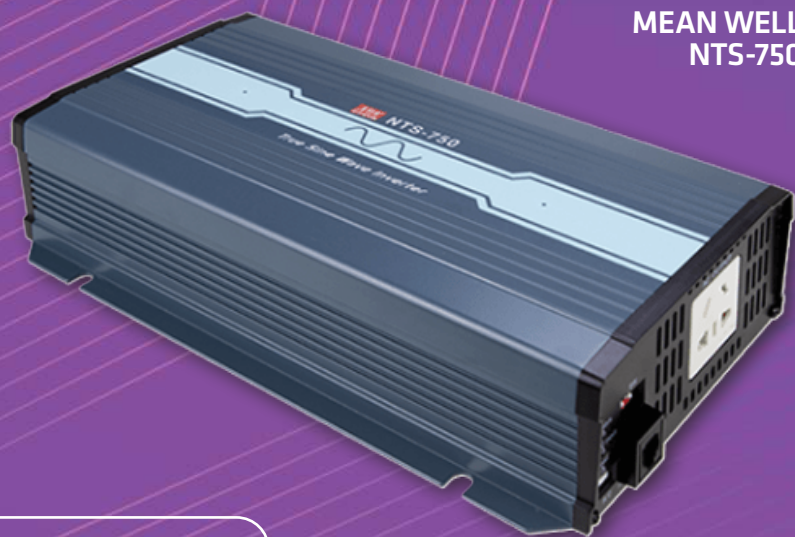
- 40W / 60W
- Universal full range input: 90~264 VAC
- DIN Rail: TS-35/7.5 or TS-35/15
- Output current adjustable through external 1~10VDC or PWM signal or resistance
- Cooling by free air convection
- Pass LPS
- DC output voltage adjustable
- LED indicator for power on
- 3 years warranty



## HIGH RELIABILITY TRUE SINE WAVE DC-AC POWER INVERTER

Upgrade to the MEAN WELL NTS-750, offering industrial-grade reliability, 93% high efficiency, and instant 200% peak power capability, ideal for home, office, or remote use.

MEAN WELL  
NTS-750



To obtain a quote or get technical advice please email [sales@admtech.com.au](mailto:sales@admtech.com.au) or phone 1300 236 467.

# DC UPS

Founded in 1991, ADELSys is a European manufacturer of DIN rail mounted DC UPS systems. The units combine a high-quality switch mode power supply, battery charger, and back-up unit in one compact DIN rail mountable housing that is easy to install. They are ideal for backing up power for critical infrastructure, safety systems, and environmental control monitors.

All units incorporate four charging phases to manage the recovery of flat batteries, bulk charge with constant current, float maintenance, absorption at a constant (boost if fast charging is enabled). An optional remote controller/display unit is available for some models which allows for off-site and monitoring and control of the UPS system. Temperature compensated charging is also available, which requires an optional temperature probe.

## ADEL CBI SERIES



- 36W ~ 480W
- 12V, 24V, 48V models
- Communication protocol: Modbus RTU, Modbus TCP/IP, SNMP
- Selectable charging curve to maximize the system efficiency
- Advanced battery management (AGM Open Lead Acid/Sealed Lead Acid, Gel, Ni-Cd, Li-Ion)
- Equipped with relays to warn against power failure or defective battery
- Temperature compensation
- Battery life testing
- UPS operation test before mains connection possible

## BTH SERIES - BATTERY HOLDERS



- 24 VDC
- No Battery Inside
- IP20 Rating
- Lead AGM, VRLA technology, maintenance-free lead-acid batteries with serial fuse
- Simple connection with screws for Wall mount or DIN rail

MEAN WELL has a line-up of DIN rail mountable security power supplies that are equipped with primary output and back-up battery power supply features.

## DRC SERIES



- 40W ~ 100W
- Universal AC input/Full range: 90~264VAC
- Single output with battery charging control, external battery can be connected to constitute UPS function
- Pass LPS (DRC-40/60)
- Fanless design, free air convection
- Alarm signal for AC OK and battery low via relay contact
- -30~+70°C wide operating temperature
- LED indicator for power on
- 3 years warranty

## DRS SERIES



- 180W ~ 480W
- Universal AC input/Full range: 90~305 VAC
- Integrated multifunctional intelligent power supply for Security/Fire Alarm (Power Supply, DC-UPS, Battery Charging, and Status Monitoring)
- Signal and alarms design meet UL2524/EN54-4/GB17945 requirement
- Load power prioritized when the AC power grid is abnormal
- Form-C relay, detects AC fail, DC OK, low battery voltage, abnormal detection of charging circuit
- Built-in MODBus protocol (CANBus optional)
- -30~+70°C wide operating temperature
- Suitable for lead acid and lithium-ion batteries
- 3 years warranty

# AC-DC ENCLOSED

## LRS SERIES



- 35W ~ 600W
- Withstand 300 VAC surge input for 5 second
- 1U low profile (30~41mm)
- Withstand 5G vibration test
- High operating temperature up to 70°C
- High efficiency, long life and high reliability
- Cooling by free air convection (LRS-35~200)
- Provide 200% peak power (LRS-100N2/200N2/350N2/600N2)
- Forced air cooling by built-in DC fan (350~600W)
- Operating altitude up to 5000 meters
- LED indicator for power on
- 3 years warranty

## RS SERIES



- 15W ~ 150W
- Universal full range input: 88~264 VAC
- All using 105°C long life electrolytic capacitors
- Withstand 300VAC surge input for 5 sec.
- Withstand 5G vibration
- High operating temperature up to 70°C
- Miniature size
- Cooling by free air convection
- LED indicator for power on
- Double, Triple & Quad output options
- 3 years warranty

## RSP SERIES



- 75W ~ 3000W
- Universal full range input: 90~264 VAC
- Active PFC function
- 1U Low profile
- Cooling by free air convection (RSP-75~200)
- Forced air cooling by built-in DC fan (RSP-320/3000)
- Built-in constant current limiting
- Remote ON/OFF control
- Remote sense/DC OK signal
- Programmable options
- LED indicator for power on
- Current sharing models
- 3 years warranty

## NSP SERIES



- 1600W ~ 3200W
- Universal full range input: 90~264 VAC
- Active PFC function
- Forced air cooling by built-in DC fan
- Output voltage programmable: Widest up to 40~125%
- Built-in intelligent fan speed control
- Built-in remote ON-OFF control/remote sense/auxiliary power
- DC OK signal/OTP alarm signal
- 5 years warranty

## PSP/PSPA SERIES



- 600W / 1000W
- Built-in active PFC function
- Forced air cooling by built-in DC fan
- With DC OK signal output
- Current sharing up to 2400W(PSP-600); 4000W (PSPA-1000)
- Built-in remote sense/remote ON-OFF control
- 3 years warranty (PSP-600)
- 5 years warranty (PSPA-1000)

**ADELSYSTEM**



## ADELSYSTEM CBI SERIES

The "All-in-One" DIN Rail UPS with combined functions of power supply, back-up module, battery charger and battery tester in one reliable system.

## HRP SERIES



- 75W ~ 1000W
- Withstand 300 VAC surge input for 5 sec.
- Built-in active PFC function
- Built-in constant current limiting circuit
- Built-in remote sense function (HRP-150)
- DC OK signal output ( $\geq 200W$ )
- Current sharing function (HRPG-600-24/36/48, HRP-1000)
- Cooling by free air ( $\leq 200W$ )
- Forced air cooling by built-in DC fan ( $\geq 300W$ )
- LED indicator for power on
- 5 years warranty

## DPU-3200



- 3200W ~ 16000W
- Universal full range input: 90~264 VAC
- High efficiency up to 94.5%
- Forced air cooling by built-in DC fan
- Output voltage and constant current level programmable
- Active current sharing up to 16000W (4+1)
- Optional PMBus or CANBus protocol
- Optional conformal coating
- 5 years warranty

## PHP-3500



- 3500W ~ 14000W
- Universal full range input: 90~264 VAC
- High efficiency up to 96%
- Fanless design, water-cooled power supply
- Slim and Low Profile (60 mm)
- Output voltage and constant current level programmable
- OVC III operating altitude up to 3000 meters
- Active current sharing up to 14000W (24V & 48V models)
- Optional PMBus or CANBus protocol
- Optional conformal coating
- Optional cold plate for effortless implementation
- 5 years warranty

## RST SERIES



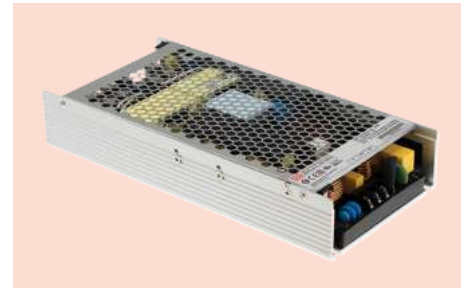
- 5000W ~ 40000W
- 3 phase input: 3-wire/ $\Delta$ 196~305 VAC or 4-wire/Y340~530 VAC
- Built-in active PFC function
- High efficiency up to 92.5%
- Forced air cooling by built-in DC fan
- Output voltage and constant current level programmable
- Built-in current sharing up to 4 units
- Built-in remote sense and ON/OFF control
- Built-in 12V/0.1A auxiliary output
- Alarm signal output
- 5 years warranty

## RST/SHP SERIES



- 7500W ~ 120kW (120,000W)
- Water / forced air cooling selectable (RST-7K5/SHP-10K)
- Forced air cooling (RST-15K/SHP-30K)
- Built-in CANBus/Optional PMBus protocol/ MODBus-RTU/RS-485(SHP)
- Output voltage adjustable range: Widest up to 1~120% (RST)
- Active current sharing up to 28.5KW(RST)
- Active current sharing up to 120KW (SHP)
- Output voltage and constant current level programmable
- Built-in ON/OFF control I/Alarm signal output
- DC OK active signal & Built-in 12V auxiliary power(SHP-10K/30K)
- Protections: Short Circuit/Overload/Over Voltage/Over Temp.
- 5 years warranty

## UHP SERIES



- 200W ~ 3500W
- Universal full range input: 90~264 VAC
- Withstand 300VAC surge input for 5 sec
- Filled with half glue, dustproof and anti-vibration (except UHP-2500)
- Slim width and low profile
- Built-in active PFC function
- 150% peak load capacity (100ms, UHP-200~500)
- Fanless design, free air convection
- Output voltage and constant current level adjustable ( $\geq 1000W$ )
- Optional PMBus or CANBus protocol (UHP-1500/2500)
- Redundancy function (UHP-R Series)/remote ON-OFF control ( $\geq 1000W$ )
- DC OK active signal/LED indicator for power on
- 3 years warranty (UHP-200~750)
- 5 years warranty (UHP-1000/1500/2500)





With the right tools, you *can* change the world.

## Harting Han® Industrial Connectors

Providing reliable and stable power, signal and data transmission in industrial applications



### Rectangular Connectors

Enables the modularisation of machines and facilities, suitable for machinery, transportation, energy, automotive and device connectivity sectors.



### Circular Connectors

Suitable for applications with limited space, such as in automating processes and railway systems.

### Industrial connectors / Han®

-  Quick and easy to assemble
-  Tool-free handling
-  Durable
-  Versatile
-  Long-life cycle

ADM is an authorised distributor of Harting Han® Industrial Connectors. We stock commonly used products in Australia, and can deliver with reduced wait times. Contact our team for your project requirements: [sales@admtech.com.au](mailto:sales@admtech.com.au) or 1300 236 467.

SCAN THE CODE  
TO LEARN MORE  
ABOUT  
HARTING HAN®



# MULTI RAIL POWER SUPPLIES

## RD SERIES – DUAL OUTPUT



- 35W ~ 125W
- Universal full range input: 300 VAC
- Withstand 5G vibration
- Cooling by free air convection

## RT SERIES – TRIPLE OUTPUT



- 50W ~ 125W
- 70°C operating temperature
- LED indicator for power on
- 100% full load burn-in test

## RQ SERIES – QUAD OUTPUT



- 50W ~ 125W
- Uses 105°C long life electrolytic capacitors
- 3 years warranty

## QP SERIES FOUR RAIL POWER SUPPLY



- 150W ~ 320W
- Universal full range input: 90~264 VAC
- Forced air cooling by built-in DC fan
- Built-in active PFC function
- CH1 & 2 can be adjustable from -5%~+10% (QP-200/320)
- CH1 & 2 remote sense function (QP-200/320)
- With PG and PF signal output (QP-200/320)
- 3 years warranty

# MULTI RAIL POWER SUPPLIES IN STOCK

ADM stocks two types of multi rail power supplies from MEAN WELL:

- Open Frame Multi Rail Power Supplies
- Enclosed Multi Rail Power Supplies

### Open Frame Multi Rail Power Supplies

Open frame multi rail power supplies will be the first choice for original equipment manufacturers (OEMs). They don't have metal enclosures, which make them more cost-effective options.

OEMs that design and build medical appliances will be interested to know that many models within the MEAN WELL range carry medical approvals.

Power outputs range from as low as five Watts up to 250 Watts. Dual, triple and quad output options are also available within this range.

This type is typically available only through special order.

### Enclosed Multi Rail Power Supplies

Enclosed multi rail power supplies have a metal enclosure, or cage. These can be used inside finished equipment, or a switchboard or control panel. There are DIN rail clips and brackets available for some of the smaller models.

Power output options range from 35 Watts up to 125 Watts. Again, there are dual, triple and quad output options available. Many models are available from stock.

### Configurable Multi Rail Power Supplies

MEAN WELL's new UMP-400 series is a game changer for off-the-shelf power supplies. What makes these multi rail power supplies remarkable is their low 1U profile and the ability to configure the four output channels, simply by selecting different modules.

### MEAN WELL UMP-400 Multi Rail Power Supply

There are two base models to choose from:

Product Code	Voltage/Current Output	Max Power
UMP-400-24	24V/16.7A*	400W*
UMP-400-48	48V/8.3A*	400W*

\*The actual current and power output will depend on the output modules selected.

There are 21 different output modules to choose from, with the following voltages: 5V, 12V, 15V, 24V, -5V, -12V, and -15V. These are offered with several different current outputs.

Not all modules can be used in both base models, check the data sheet to ensure that the module you wish to use is compatible with the base unit selected.

Do not hesitate to contact ADM if you would like help in selecting the correct models. A member of our expert team will gladly help.

Unlike most other multi rail power supplies, the UMP-400 series has no minimum load requirement for it to function correctly. Usually, you would have to check the data sheet for the minimum load requirement on each channel and check that you could fulfill this load requirement. With the UMP-400 you can relax.

For maximum reliability these power supplies are not fan cooled. Instead, they rely on air convection and heat being conducted away through the metal enclosure of the equipment they are mounted in. The data sheet details the minimum surface area to ensure adequate cooling.

With a 3-year warranty and an operating temperature range of -30 ~ +70 °C, the MEAN WELL UMP-400 series is an ideal solution that call for a highly reliable multi rail power supply, that fits into a small space.

# BATTERY CHARGERS

## NPB-120~360



- Universal AC input/Full range: 90~264VAC
- Compact size, wide output voltage range for charging
- Fanless design (NPB-120/240)
- Fan ON/OFF control (Depends on internal temperature, NPB-360)
- Charging voltage/current adjustable by VR
- 2 or 3 stage selectable by DIP S.W
- No load power consumption <0.5W (AC S.W off)
- -30~+70°C wide operating temperature
- UL/EN62368-1 & EN60335-1/2-29 dual certification approved
- Suitable for charging lead-acid batteries and lithium batteries
- 3 years warranty

## RPB/RCB-1600



- Universal AC input/Full range: 90~264VAC
- 3 stage charging curves
- Withstand 300VAC surge input for 5 secs.
- Built-in I<sup>2</sup>C interface, PMBus protocol (CANBus protocol selectable)
- 1U low profile with) 41 mm height)
- Rack mountable, sharing up to 8000W (RCB-1600)
- Active current sharing up to 4800W (RPB-1600)
- Forced air cooling by built-in DC fan
- Built-in OR-ing FET, support hot swap
- Optional conformal coating
- Suitable for charging lead-acid batteries and lithium batteries
- 5 years warranty

## DBU/NCP-3200



- Universal AC input/Full range: 90~264VAC
- Built-in default 3 stage charging curves and programmable curve
- High efficiency up to 94.5%
- High power density 37W/in<sup>3</sup>
- Forced air cooling by built-in DC fan
- Built-in OR-ing MOSFET, support hot swap
- Active current sharing up to 6400W (DBU-3200)/12800W (NCP-3200)
- Built-in I<sup>2</sup>C interface, PMBus protocol (Optional CANBus)
- Optional conformal coating
- Suitable for charging lead-acid batteries and lithium batteries
- 5 years warranty

## SBP-001



- For programming battery chargers
- Charging curve can be programmable when matching with MEAN WELL's Intelligent Battery Chargers
- Suitable for models: ENC-120/240/360, NPB-450/750/1200/1700, DRS-240/480, HEP-1000, HEP-2300-55, RPB/RCB-1600, DBU/NCP-3200
- Simple connection and configuration
- No need of battery or AC power
- LED status indicator

## HEP-600C / HEP-2300



- Universal AC input/Full range: 85~264VAC
- 3 stage charging
- Built-in active PFC function
- High efficiency up to 96%
- Fanless design, cooling by free air convection
- Aluminium case and filling with heat-conducted glue
- Withstand 10G vibration test
- -40 ~ +70°C wide operating range
- Operating altitude up to 5000 meters
- Output voltage and output current can be adjusted through internal potentiometer
- Can charge lead-acid and lithium batteries in harsh environments
- 6 years warranty

## BIC-2200



- AC-DC Bidirectional Power Supply
- Full digital design with 93% conversion efficiency for both AC/DC & DC/AC conversion
- 1U low profile
- Ultrafast switching time <1ms (AC/DC - DC/AC)
- Active current sharing up to 11KW (4+1)
- <3% Low THDi in both conversion mode
- Force charging and discharging mode with CANBus model
- 5 years warranty



# POWER ADAPTERS

## GST SERIES



- Global Certified
- No load power consumption <0.075W~0.5W
- 450W peak power for 3 sec. (Only GST360)
- Energy efficiency Level VI
- Complies with EISA 2007/DoE, NRCAN, Korea K-MEPS, AU/NZ MEPS, EU ErP & CoC Version 5
- LED indicator for power on
- Pass LPS ( $\leq 60W$ )
- 3 pole IEC320-C14 AC inlet (A-Type)
- 2 pole AC inlet (B/E/U-Type)
- Class I power unit ( $\geq 40W$ )
- Fanless design with -30~+70°C wide range working temp.
- Fully enclosed plastic case
- 3 years warranty

## NGE SERIES



- 12W, 18W, 30W, 45W, 65W, 90W
- Interchangeable AC plugs (Originally with folded US plug; UK, EU, AU convertible)
- CN plug (Non-interchangeable)
- Universal AC input/Full range: 80~264VAC
- ITE 62368-1, medical 60601-1, household 60335-1 safety approved
- Extremely low leakage current, suitable for BF application with appropriate system consideration
- Ultra slim design (28~30mm)
- No load power consumption <0.075~0.1W
- Energy efficiency Level VII
- Complies with EISA 2007/DoE, EU ErP & CoC Version 5
- -30~+70°C wide range working temp.
- IP22 Level
- 3 years warranty

## GSM SERIES



- Universal AC input/Full range: 80~264 VAC
- Medical safety approved (2xMOPP)- for use in medical applications only
- Suitable for BF application with appropriate system consideration (Except for A-Type)
- Extremely low leakage current
- No load power consumption <0.075~0.3W
- Energy efficiency VI (GSM06, GSM18/25 5~9V for Level V)
- Fully enclosed plastic case
- Comply with EISA 2007/DoE, NRCAN, AU/NZ MEPS, EU ErP and meet CoC Version 5
- Working temperature up to +70°C
- 3 years warranty

# AC/AC TRANSFORMERS

Power Source has a long-established reputation for supplying good quality AC transformers in Australia. Its AC/AC transformer range is coated with tropic-proof anti fungus varnish which make them suitable for use in various Australian climatic conditions. All models are tested and certified safe for use with compliance to Australian standards.

## STANDARD SERIES



- Input voltage: 240 VAC
- Rated output power between 40VA ~ 800VA
- Output voltage between 24 VAC 1.67A ~ 24 VAC 33.33A
- Single Phase Control Transformer
- IP20
- 1 year warranty

## DIN RAIL SERIES



- Input voltage: 240 VAC
- Rated output power between 40VA ~ 100VA
- Output voltage between 24 VAC, 1.67A ~ 24 VAC, 4.16A
- Single Phase Control Transformer
- IP20
- 1 year warranty
- Models available with DIN Rail Kit:  
TX40-240-24, TX63-240-24, TX100-240-24



**ADM has an extensive range of LED strips, modules and neon flex for all your lighting and signage requirements.**



**Can't find what you're looking for?**

ADM also offers tailored LED lighting solutions. Contact our team if you can't find off-the shelf solutions for your general lighting and signage requirements.

[sales@admtech.com.au](mailto:sales@admtech.com.au) / 1300 236 467

# AC/DC RACK MOUNT POWER SUPPLIES

## RCP SERIES



- Universal AC input/Full range: 90~264 VAC
- Built-in active PFC function
- Built-in auxiliary power
- Protections: Short Circuit/Overload/Over Voltage/Over Temp.
- Forced air cooling by built-in DC fan
- High power density up to 25W/inch<sup>3</sup>
- 1U low profile (41mm height)
- Output voltage and constant current level programmable
- Active current sharing; max. of 3 racks can be operated in parallel
- Max. parallel power: RCP-1000: 8KW, RCP-1600: 24KW, RCP-2000: 20KW
- Built-in remote ON/OFF control & remote sense function
- Hot swap support
- I<sup>2</sup>C serial data bus selectable; Built-in PMBus serial communication
- AC OK and DC OK signal output
- 5 years warranty

## NCP SERIES



- Universal AC input / full range
- Power supply or charger mode can be selected by PMBus, CANBus or SBP-001 (only for 24V/48V models)
- High efficiency up to 94.5%
- Built-in programmable output voltage (PV) and programmable output current (PC)
- Active current sharing up to 10 rack shelves (DHP-1UT-B) and the maximum power supply that can be connected in parallel is 40 units
- Design refers to SEMI F47@200VAC
- 5 years warranty

## CMU2 SERIES



- Integration on system power and power management
- 2 models in 3U 19-inch rackmount and standalone configurations
- 7" LCD touch panel and buttons for easy on-site operation
- Ethernet port for on-site or remote monitoring, controlling over the system
- Support PMBus, CANBus & RS-485, RS-232 communication protocols
- Four user programmable relay outputs for conventional remote monitoring or warning
- 5 years warranty

## DRP SERIES



- 3200W
- Complete rack mountable front-end solution: rectifier and charger
- 1U low profile
- 19-inch rack shelf available

# DC-DC CONVERTERS

## SD SERIES



- 15W ~ 1000W
- 2:1 wide input range (SD-15~350)
- 4:1 wide input range (SD-500/1000)
- I/O isolation: 1.5KVAC (SD-15~350), 2KVAC (SD-500/1000)
- Fanless design, cooling by free air convection (SD-15~200)
- Forced air cooling by built-in DC fan (SD-350~1000)
- DC input active surge current limiting (SD-500 only)
- 12 Vaux / 0.25A output (SD-500/1000)
- Built-in remote ON/OFF control and remote sense (SD-500/1000)
- 2 years warranty (SD-15~350)
- 3 years warranty (SD-500/1000)

## RSD SERIES



- 30W ~ 500W
- Railway & ITE dual certification
- 2:1 wide input range (RSD-100~500), 4:1 wide input range (RSD-30/60)
- 4KVDC I/O reinforced isolation
- Fanless design, cooling by free air convection
- -40~+70°C wide operating temperature (RSD-500: -40~+80°C)
- Built-in constant current limiting circuit
- Ultra compact and 1U low profile (25~41 mm)
- Half encapsulated, moistureproof, dustproof and 5G vibration resistance
- All using 105°C long life electrolytic capacitors
- LED indicator for power on
- 3 years warranty

## DDR SERIES



- 15W ~ 480W
- Plastic case
- 4:1 ultra-wide input range
- Compact size with 1SU~3SU width
- Fanless design, cooling by free air convection
- DIN Rail: TS-35/7.5 or TS-35/15
- 4KVDC I/O Reinforced isolation
- -40~+85°C wide operating temperature
- DC output adjustable (+/-10%)
- 3 years warranty

## DDRH SERIES



- 15W ~ 240W
- 150~1500VDC 10:1 ultra-wide input range (DDRH-15~60)
- 250~1500VDC 6:1 ultra-wide input range (DDRH-120/240)
- 4KVDC I/O reinforced isolation
- Fanless design, cooling by free air convection
- Potted with silicone, dust and moisture proof (DDRH-15~60)
- DIN Rail: TS-35/7.5 or TS-35/15

- -40~+80°C wide operating temperature (>+50°C derating based on models)
- Operating altitude up to 5000 meters
- OVC II
- DC OK relay contact
- DC output adjustable (+20%, only DDRH-60~240)
- 3 years warranty

## RSDH SERIES



- 150W ~ 300W
- 250~1500VDC 6:1 ultra-wide input range
- 4KVAC I/O reinforced isolation
- Fanless design, cooling by free air convection
- Half encapsulated, dustproof, moistureproof, 3G vibration resistance
- -40~+80°C wide operating temperature (>+55°C derating)
- OVC II
- Operating altitude up to 5000 meters
- DC output adjustable (+20%)
- 1U low profile (41mm)
- 3 years warranty

# DC-AC INVERTERS

## NTS SERIES



- High frequency design, compact size and light weighted
- Built-in type (NTS-250P/400P)
- True sine wave output (THD<3%)
- High surge power up to 200%
- Fanless design, free air convection (NTS-250P/400P/300)
- AC output voltage and frequency selectable by DIP S.W
- No load power consumption <1.2~1.7W at standby saving mode (According to models)
- -25~+70°C wide operating temperature
- Power ON-OFF remote control
- Suitable for lead-acid or li-ion batteries
- Internal PCB board with coating protection
- 3 years warranty

## NTU SERIES



- Built-in UPS function (AC Bypass)
- True sine wave output (THD<3%)
- High surge power up to 200%
- AC output Voltage and frequency selectable by DIP S.W
- -25~+70°C wide operating temperature
- Power ON-OFF remote control
- Remote controller (IRC1, IRC2, IRC3 accessory sold separately, suitable for 1200W~3200W)
- RS-232 cables and carry handle sold separately
- Suitable for lead-acid or li-ion batteries
- Internal PCB board with coating protection
- 3 years warranty

## NTN SERIES



- 5000W
- Combining AC utility, battery power source and solar charger to supply AC output
- True Sine wave output (THD<3%)
- AC utility charger up to 135A /4KW max.
- Can support external MPPT solar charger
- AC by-pass without interruption, transfer time <10ms
- High surge power up to 10KW
- Parallel synchronised operation up to 30KW (5+1 unit)
- -30°C~+70°C wide operating temperature
- Support MODBus-RTU(RS-485) communication
- 3 years warranty

## ESR SERIES



- AC/DC Energy Recovery System Power Supply
- Wide input voltage range: 10~60VDC/60~380VDC by models
- Modular design, flexible configuration of aging tests in groups or partitions
- Flexible CC/CV/CP operation modes
- Built-in CANBus communication interface, and can be used with CMU2A for remote monitoring, setting, data analysis and management
- Max. of 64 units ERS-1400 can be connected
- Aging test system, energy saving & carbon reduction
- 5 years warranty

## ERG SERIES



- DC/AC Grid-connected Energy Recovery Inverter
- Wide input voltage range: 10~60VDC/60~420VDC by models
- Modular design, flexible configuration of aging tests in groups or partitions
- Flexible CC/CV operation modes
- Built-in CANBus communication interface, and can be used with CMU2A for remote monitoring, setting, data analysis and management
- Max. of 64 units ERG-5000 can be connected
- Aging test system, energy saving & carbon reduction
- 5 years warranty



# INDUSTRIAL RANGE ENCLOSURES



Protect your equipment from harsh weather and environmental elements

- ✓ Dust and water resistant
- ✓ Comes with mounting plates and fittings
- ✓ IP66 protection rating



## Plastic Enclosures

- ✓ Made from polycarbonate plastic
- ✓ IK-9 impact resistance rating
- ✓ UL945VA flame retardant rating
- ✓ UL746C UV resistant rating
- ✓ Suitable temperatures: -40°C to +80°C



## Metal Enclosures

- ✓ Made from galvanised steel
- ✓ Corrosion resistant – RAL7035 powder coating
- ✓ With removable gland plate and earthing kit
- ✓ Interchangeable door opening with heavy-duty door hinges

## POWER SOURCE

### ABS PLASTIC ENCLOSURES

Low-cost protection for your electronic and electrical equipment.

- ✓ Customisable and lightweight
- ✓ Readily available in different sizes
- ✓ Available with or without a lid
- ✓ IP66 protection rating
- ✓ IK-08 impact rating
- ✓ UL94-V2 flame retardant rating
- ✓ UV stabilised



Contact the ADM team for assistance with your size requirements: email [sales@admtech.com.au](mailto:sales@admtech.com.au) or phone 1300 236 467.

## A301/A302



The MEAN WELL A301(12V) and A302(24V) series inverters have a modified sine wave output, suitable for powering non-sensitive equipment and equipment with built-in rectifiers.

- 100 ~ 2500W
- High frequency & portable design

- With power ON/OFF switch and LED indicator
- Remote ON/OFF controller sold separately (1000~2500W)
- Built-in USB 5VDC/0.5A, fanless (100W)
- Input and output are fully isolated
- 1 year warranty

# AC/DC MODULAR POWER SUPPLIES

## NMP SERIES



- Universal AC input/Full range: 90~264 VAC
- Medical approval (2\*MOPP)
- Suitable for BF application with appropriate system consideration (Touch current <100μA/264VAC)
- 1U low profile
- Vout and Iout programmable
- Built-in parallel function
- Remote ON-OFF/Auxiliary DC Output /Over Temp. Alarm/DC OK
- Cooling by thermostatically controlled fan with fan alarm function
- 5 years warranty

## UMP SERIES



- Universal AC input/Full range: 90~264VAC
- Ultra Slim 1U profile
- Fanless design, 400W free air convection
- Flexible output channels with maximum 4 outputs
- Master output channel for 24V/48VDC
- 5V/12V/15V/24V DC-DC modules configurable
- No minimum load required
- -30~+70°C wide operating temperature
- LED indicator for power on
- 3 years warranty

## MP450/650/1K0 SERIES



- Universal AC input/Full range: 85~264 VAC
- Various output configuration is selectable
- Built-in active PFC compliance to EN61000-3-2
- Built-in constant current limiting circuit for single output modules
- Remote control on each output module
- Cooling by built-in DC fan with fan alarm function
- Additional 12V/0.1A auxiliary output for remote control
- 3 years warranty

# OPEN FRAMES

## IRM SERIES



- 5W ~ 600W options available
- Universal AC input range
- Industrial and Medical certified

## EPS SERIES



- Single or Multiple output
- 3.3Vdc ~ 54Vdc output options
- PCB or chassis mounting

## LOP-600



- Compact and powerful
- 3 years warranty

## LPS SERIES



# RAILWAY POWER SUPPLIES

## PREMIUM PSU SPARK SERIES

### CVS-280



- Input Voltage Range [V] 400 - 1100
- Output Voltage Range [V] 21.6 - 121
- Parallelizable units by ORing
- Low battery voltage starter
- Active catenary surges filter
- Input voltage according to EN50163:2006 and EN50124-2:2017

### OVX-6400



- Input Voltage Range [V] 400-1000
- Output Voltage Range [V] 80 - 400
- SiC Technology: high power density
- Active catenary surges filter
- Sine wave output voltage
- Configurable power & soft start
- Input voltage according to EN50163:2006 and EN50124-2:2017

## PREMIUM PSU AC MASTER SERIES

### VDX-10K



- Suitable for motors control
- Remote control via RS232
- Sine wave output voltage
- Input Voltage Range [V] 360-440
- Output Voltage Range [V] 80-400

### TDS-3300



- Suitable for socket AC power
- Input-Output Isolation
- Stable output voltage
- Input Voltage Range [V] 432-528
- Output Voltage Range [V] 230



## PREMIUM PSU DC/AC INVERTERS

### OCS SERIES



- Sine wave output voltage
- Selectable output frequency: 50/60Hz
- Adjustable output voltage
- Output failure alarm
- Remote inhibit
- High input-output isolation 3000Vrms
- Optional railway version EN50155
- Fire and smoke: EN45545-2 approved

### OPS SERIES



- Extreme reliability
- Sine wave output voltage
- IP66 protection
- Output failure alarm
- Remote inhibit
- High input-output isolation 3000Vrms
- Optional railway version EN50155
- Fire and smoke: EN45545-2 approved

### ODS SERIES (750, 1500, 3000)



- Very high power density
- Configurable power
- Sine wave output voltage
- Selectable output frequency: 50/60Hz
- High input-output isolation 3000Vrms
- Remote inhibit
- Optional railway version EN50155
- Fire and smoke: EN45545-2 approved

### ODX SERIES (1300, 3000, 4500, 6000)



- Very high power density
- Sine wave output voltage
- Configurable power & soft start
- Suitable for motors control
- High input-output isolation 3000Vrms
- Remote off opto-coupled
- Remote control via RS232
- Fire and smoke: EN45545-2 approved



## PREMIUM PSU DC/DC CONVERTERS

### CCS-60



- 50-70W
- Low profile
- Extreme reliability
- Railway features according to EN50155
- Hold up time 10ms
- Remote inhibit
- Adjustable output voltage
- Remote sensing
- Input voltage OK LED
- Efficiency up to 88%

### CTS SERIES



- 50-240W
- Extreme reliability
- Wide input/output range combinations
- MTBF >1Mh @ 40°C
- Designed according to EN50155
- Fire and smoke: EN45545-2 approved
- High input-output isolation
- Adjustable output voltage
- Remote sensing
- Output voltage presence LED

### CLS-120



- Universal input range
- Efficiency up to 91%
- Output voltage: 12V, 24V, and 48V
- Operating temperature up to 85°C (OT6 with derating)
- Designed according to EN50155 (Class S2: hold-up time 10ms)
- EN45545-2 approved
- Fanless – convection cooled
- Easy install: wall mount, DIN rail, rack mount

### CRS SERIES



- 500W – 2000W
- Extreme reliability
- Oring FET
- Current sharing & hold-up time options.
- High input-output isolation
- Adjustable output voltage
- Remote inhibit
- Remote sensing

### CBS-10K



- Up to 10 kW during 40s
- O-ring output diode up to 2000V
- High input-output isolation (5000 Vrms)
- 500Vdc output (up to 700V under request)
- 24Vdc, 48Vdc, 72Vdc, 110Vdc input voltage models
- Remote control via RS232
- Optional CAN BUS
- High power density
- Alarm by isolated relay contacts
- Up to 95% efficiency

**NOW AVAILABLE!**

**MW MEAN WELL XDR-E SERIES DIN RAIL PSU**

 A silver metal DC/DC converter module with a green PCB on the left side and a large heat sink on the right side. It has a DIN rail mounting bracket on the left.
 

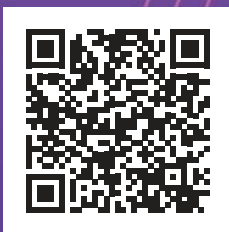
**Wider range of 12V models available: 75W ~ 480W\***

(\*derating curve info available in datasheet)

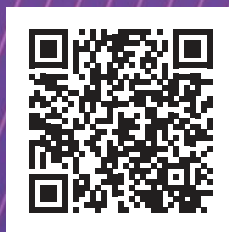
**ADM has an extensive range of power cables and accessories in stock.  
More items can be found in our webstore.**



**Please scan the QR codes below to see available products.**



**CABLES**



**ACCESSORIES**



# ABOUT US

## WHO ARE WE?

ADM Systems Pty Ltd is a family run group of businesses, first established by our Managing Director, Glenn Bates in 1986, and now led by our CEO, Kristin Brown.

Since then, we have grown to become Australia's largest distributor of MEAN WELL LED drivers, Power Source LED drivers, lighting control devices, and accessories. We support lighting designers, installers, and resellers.

## WHAT DO WE DO?

At ADM we do what we do because we care.

Our team cares about your project and will do all they can to ensure you find the most appropriate solution.

We get that lead times can be a hassle, so we try and carry as much stock as possible to avoid that headache.

Despite that, you rightly expect not to pay too much for this service.

Technical support matters, which is why our technical team keeps up to date with the latest product information.

ADM is a family run business that was established in 1986 by Glenn Bates. From the outset Glenn understood the importance of customer care being at the heart of everything we do. This ethos continues today under the guardianship of our CEO, Kristin Brown, Glenn's daughter.

## OUR SERVICES INCLUDE:

Expertise and consultancy across our product range

Presetting of LED drivers and other devices prior to despatch.

Bespoke cable / connector configurations.

Assembly of customised solutions.

## HOW WE DO IT.

ADM has a strong commitment to holding stock. This means you know the product is available when you need it.

We also offer volume pricing and scheduled ordering to original equipment manufacturers, who need to order in high quantities, as well as convenient online ordering services for all customers.

Our technical staff undertake regular factory training and have close working relationships with our leading suppliers, so that they are up to date with the latest technologies available. This ensures you have the best performing position transducers, load cells, led drivers and all other components for your application.

## WHY WE DO IT?

### Because it matters to you.

We understand that it matters that you can quickly get a product to your door and that you need to also get that product to your door at a fair and reasonable price.

We understand that technical support matters, which is why we keep our technical team up to date with the latest product information.

We understand that you want to partner with a supplier that is focused on what matters to you.

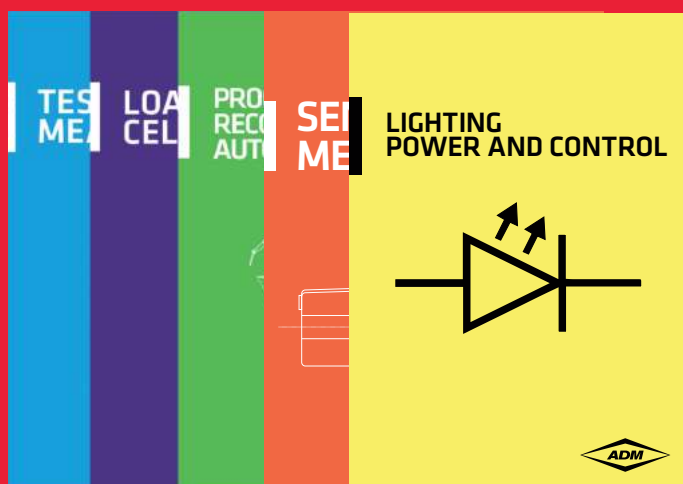


# OUR SUPPLIERS



POWER  
SOURCE

ADELSYSTEM



## ADM Product Brochures

### THE BEST PRODUCTS AT YOUR FINGERTIPS

ADM Systems represents leading manufacturers of the finest engineered power supplies, LED drivers, encoders, position transducers, pressure transducers, load cells, and other industrial and process measuring devices in Australia.

We have launched 4 product brochures that detail our expertise in Position Sensing, Load Cells, Test & Measurement Instrumentation, and Process Control, Recording and Automation. To request your own copy please contact our office, or your Technical Sales Representative.



### ADM SYSTEMS GROUP

+61 1300 236 467  
sales@admtech.com.au  
[admtech.com.au](http://admtech.com.au)

Contact us for a copy of our other product brochures.

